



High Voltage Rectifier Silicon Stack

2CL35KV/3.0A

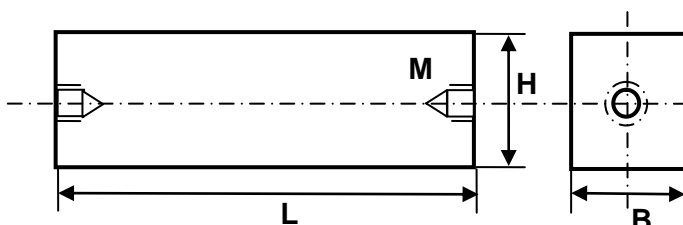
2CL35KV/3.0A High Voltage Rectifier Silicon Stack

Characteristic



- Using advanced manufacturing technology, working junction temperature - 40 + 150 C
- Low leakage current, low power
- Excellent Instantaneous High Current Shock Resistance
- Selection or customization of general and multiple dimensions
- High voltage rectification, isolation, protection and other functions in the

Setting Electrical Characteristics (Ambient temperature 25 C unless otherwise specified)	Symbol	Condition	Value	
Reverse Repetitive Peak Voltage	V_{RRM}		35	KV
Reverse Peak Operating Voltage	V_{RWM}		35	KV
Maximum Average Forward Current	I_O	@ $T_{break}=50^{\circ}C$	3.0	A
Maximum Inrush Rated Current	I_{FSM}		60	A
Maximum Forward Pressure Drop	V_{FM}	$T_a=25^{\circ}C$	42	V
Reverse Peak Current	I_{RRM}		5.0	μA
Maximum Junction Temperature	T_J		150	$^{\circ}C$
Storage Temperature Range	T_{stg}		-40 ~ +150	$^{\circ}C$



Symbol	Size mm		
L	200	300	mm
H	35	48	mm
B	25	25	mm
M	M6	M6	mm